



THE
MARQ

*in*place.



Integrated Business Community

A fresh perspective on work and connection

A place of many worlds in one, where culture, business, design, and lifestyle meet in unexpected harmony. Here, every place reveals greatness, and together they create a future without boundaries.



in place.
in place.
in place.
in place.
in place.
in place.
in place.

Where it all unfolds

- All renders, visuals and layouts are for illustrative purposes only. Facade designs, elements and materials may vary by elevation style.
- Drawings are not to scale. Areas and dimensions may vary and are subject to change without prior notice.



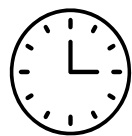
*The story of in**place***

This is a story of life defined by what's next — a destination that sets the trend, shapes new experiences, and redefines the way we live. Rising across 20 acres in New Cairo, Inplace is an Integrated Business Community that unites four distinctive districts around a vibrant central piazza; the heart of the destination where every story connects. Designed for diversity, it brings together offices, retail, F&B, and clinics into one dynamic, living environment where work, leisure, and culture seamlessly connects. Here, every visit unfolds a new story, every place offers a fresh perspective, and together they create a journey through endless experiences.

The next “in” destination

Inplace offers seamless connectivity, perfectly positioned at the next in destination in New Cairo. With direct access from side streets branching off both North and South 90th Street, it ensures effortless movement in and out of the destination. Surrounded by the city’s most prominent landmarks and lifestyle hubs, Inplace isn’t just centrally located; it is the next destination at the core of it all.

 **5 MINUTES**
TO AUC CAIRO

 **10 MINUTES**
TO SUEZ ROAD

 **25 MINUTES**
TO CAIRO INTERNATIONAL AIRPORT



*Crafting the in**place** experience*



- All renders, visuals and layouts are for illustrative purposes only. Facade designs, elements and materials may vary by elevation style.
- Drawings are not to scale. Areas and dimensions may vary and are subject to change without prior notice.

*in*place.

A destination designed around you

Inplace is designed to offer a seamless and engaging experience across four distinctive districts, all anchored by a vibrant central piazza. The design concept emphasizes personalization, blending sleek, contemporary exteriors with walls of glass and fluid connections between indoor and outdoor spaces. Every element is thoughtfully crafted to reflect individuality, foster interaction, and create a cohesive destination where work, lifestyle, and culture come together.



- All renders, visuals and layouts are for illustrative purposes only. Facade designs, elements and materials may vary by elevation style.
- Drawings are not to scale. Areas and dimensions may vary and are subject to change without prior notice.

inplace.

inplace.

inplace.

inplace.

inplace.

inplace.

inplace.

From concept to creation

*Designed by
renowned architects*



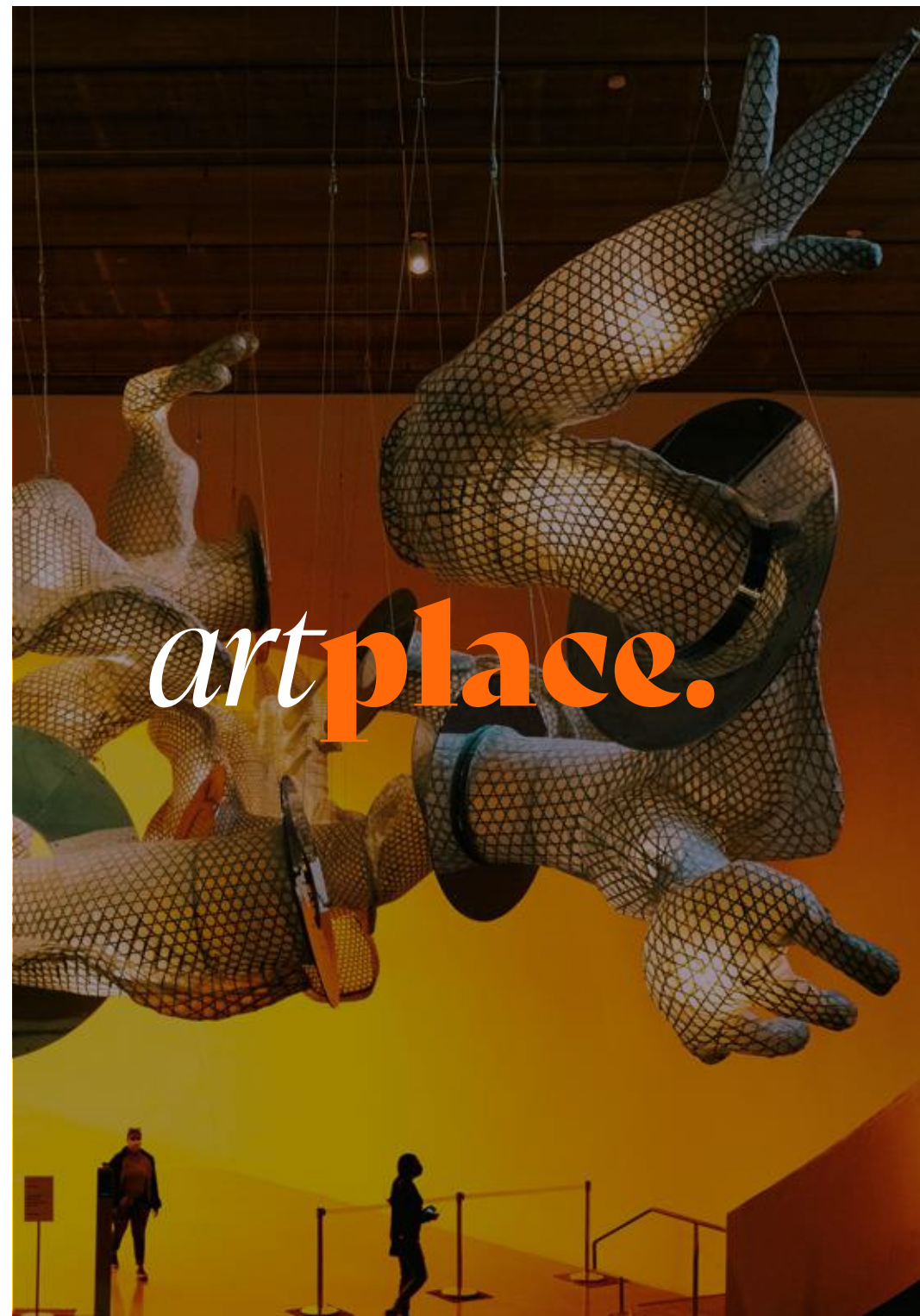
Inplace is brought to life through the collaboration of visionary designers, each contributing to its distinctive character and identity. Among them, Alchemy Architecture envisioned the Iconic Building, the heart of the destination. Their design transforms structure into experience, creating a space where architecture is not only seen but felt, and every detail reflects movement and connection.

- All renders, visuals and layouts are for illustrative purposes only. Facade designs, elements and materials may vary by elevation style.
- Drawings are not to scale. Areas and dimensions may vary and are subject to change without prior notice.

*All in
one place*

inplace.
inplace.
inplace.
inplace.
inplace.
inplace.
inplace.

Not just a place, but a one of a kind destination



*where diverse districts come together to create
one Integrated Business Community.*



*nature***place.**

Brings serenity through shaded pathways, landscaped areas, and terraces that invite calm and reflection.



*art***place.**

Inspires creativity and collaboration through vibrant, expressive design that sparks fresh perspectives.

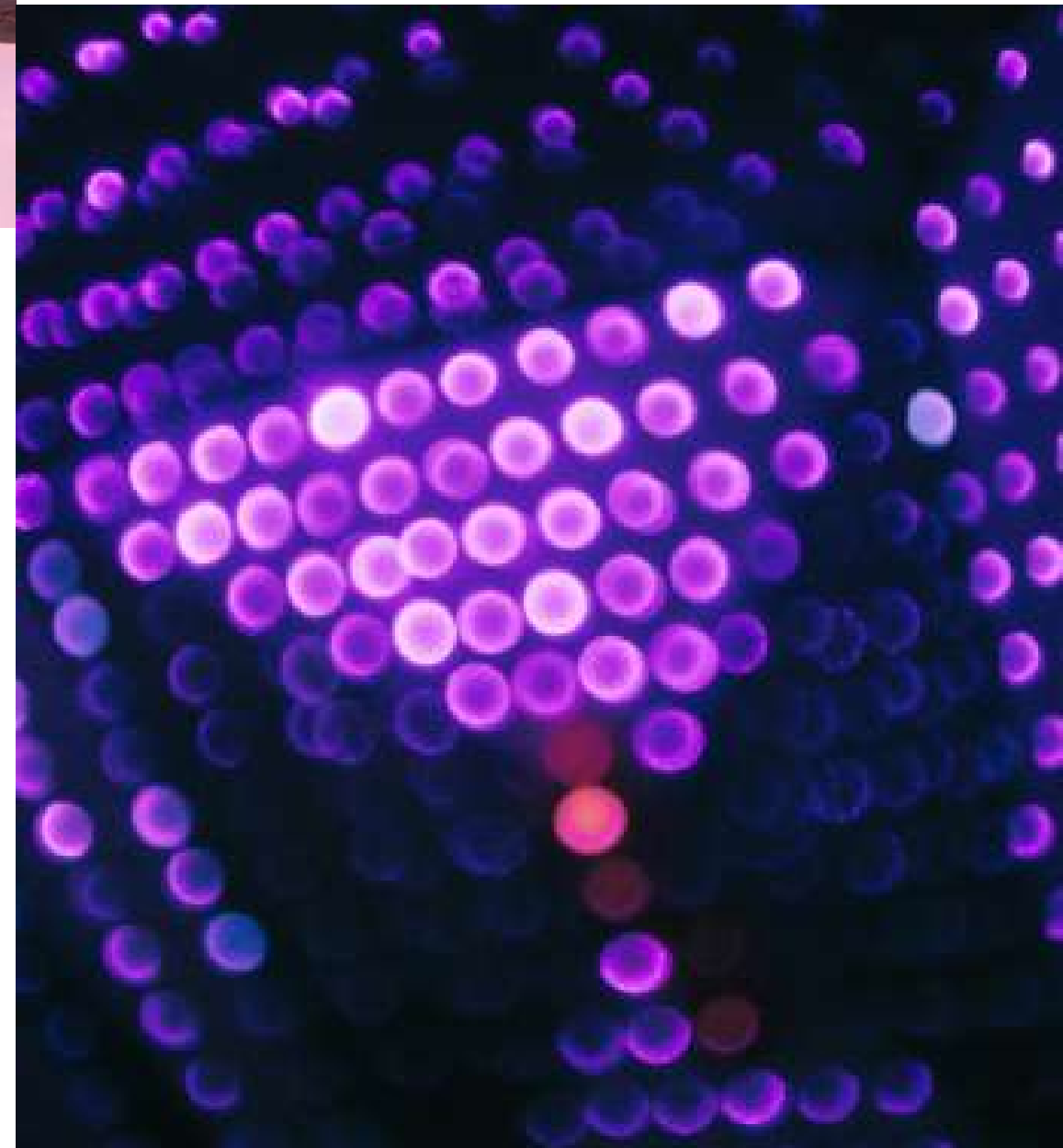
*grand***place.**

Celebrates sophistication and style, blending refined retail and dining with rooftop lounges and terraces that inspire connection.



*tech***place.**

Drives innovation forward, where modern architecture meets energy and discovery at every turn. Together, they create a cohesive experience.





in place.
in place.
in place.
in place.
in place.
in place.
in place.

• All renders, visuals and layouts are for illustrative purposes only. Facade designs, elements and materials may vary by elevation style.
• Drawings are not to scale. Areas and dimensions may vary and are subject to change without prior notice.

From vision to reality



86,500 SQM
Gross Land Area

200,000 SQM
Built-up Area

25,000 SQM
Retail Space

175,000 SQM
Office Space

19 Buildings
F&B, Retail, Offices, Gym, Banks

90,000 SQM
Underground Parking

- All renders, visuals and layouts are for illustrative purposes only. Facade designs, elements and materials may vary by elevation style.
- Drawings are not to scale. Areas and dimensions may vary and are subject to change without prior notice.

Visionary Masterplan

*in***place.**



- All renders, visuals and layouts are for illustrative purposes only. Facade designs, elements and materials may vary by elevation style.
- Drawings are not to scale. Areas and dimensions may vary and are subject to change without prior notice.



- All renders, visuals and layouts are for illustrative purposes only. Facade designs, elements and materials may vary by elevation style.
- Drawings are not to scale. Areas and dimensions may vary and are subject to change without prior notice.

The arrival experience



All renders, visuals and layouts are for illustrative purposes only. Facade designs, elements and materials may vary by elevation style.
• Drawings are not to scale. Areas and dimensions may vary and are subject to change without prior notice.

The living runway



Business hotel

- All renders, visuals and layouts are for illustrative purposes only. Facade designs, elements and materials may vary by elevation style.
- Drawings are not to scale. Areas and dimensions may vary and are subject to change without prior notice.



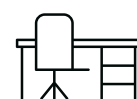
The theatre

*Crafted for
every need*

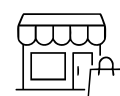
- All renders, visuals and layouts are for illustrative purposes only. Facade designs, elements and materials may vary by elevation style.
- Drawings are not to scale. Areas and dimensions may vary and are subject to change without prior notice.



Every detail at inplace is thoughtfully crafted to blend work, leisure, and lifestyle in one seamless experience.



Business



Retail



F&B



**On-site
Clinic**



Parking



**Entertainment &
Open spaces**



**GYM & Wellness
Services**



Supermarket



Bank

*For businesses ready
for what's next in New Cairo.*



**Public WIFI
Campus wide**



**Personalized
Signage**



**Fire-Fighting
System**



**24/7
security**



**Access
Control**



**Security & CCTV
Campus Wide**



**Triple
Play**



**Facade Cleaning
System**



**Emergency Electricity
System**






*nature***place.**

Where nature flows into everyday life.



*nature*place.

Natureplace brings the calm of nature to Inplace, where every space encourages relaxation and reflection. Shaded pathways, thoughtfully designed seating, and landscaped areas create a peaceful atmosphere, while outdoor terraces seamlessly extend indoor comfort. Blending greenery and design, Natureplace offers a continuous sense of calm throughout the day.

-  *Shaded pathways*
-  *Seating & Landscaped areas*
-  *Outdoor terraces*

- All renders, visuals and layouts are for illustrative purposes only. Facade designs, elements and materials may vary by elevation style.
- Drawings are not to scale. Areas and dimensions may vary and are subject to change without prior notice.



- All renders, visuals and layouts are for illustrative purposes only. Facade designs, elements and materials may vary by elevation style.
- Drawings are not to scale. Areas and dimensions may vary and are subject to change without prior notice.



- All renders, visuals and layouts are for illustrative purposes only. Facade designs, elements and materials may vary by elevation style.
- Drawings are not to scale. Areas and dimensions may vary and are subject to change without prior notice.



- All renders, visuals and layouts are for illustrative purposes only. Facade designs, elements and materials may vary by elevation style.
- Drawings are not to scale. Areas and dimensions may vary and are subject to change without prior notice.

A person in a dark suit is walking away from the camera in a brightly lit hallway. The floor is polished and reflects the overhead lights, which create a series of parallel, diagonal stripes of light and shadow across the surface. The person is carrying a briefcase in their right hand. The overall atmosphere is professional and modern.

inplace.

inplace.

inplace.

inplace.

inplace.

inplace.

inplace.

Introducing
*in***place** Business Suites

*in***place**

The first-of-its-kind Business Suites

The Business Suites blend professional functionality with luxury hospitality, redefining the work experience with unmatched services and amenities. The Business Suites are equipped with essential services, seamless connectivity, and on-site facilities, surrounding retail, dining, and wellness experiences transform daily routines into moments worth remembering. Here, business finds innovation, leisure sparks creativity, and every corner reveals another chapter of life. Inplace Business Suites is where work feels inspiring, connections feel seamless, and success feels within reach.



- All renders, visuals and layouts are for illustrative purposes only. Facade designs, elements and materials may vary by elevation style.
- Drawings are not to scale. Areas and dimensions may vary and are subject to change without prior notice.

*in***place**

Business Suite entrance lobby





- All renders, visuals and layouts are for illustrative purposes only. Facade designs, elements and materials may vary by elevation style.
- Drawings are not to scale. Areas and dimensions may vary and are subject to change without prior notice.

inplace Business Club

inplace *Business Club*

Inplace Business Club provides exclusive membership with access to premium amenities that elevate your work experience. From meeting rooms and business centers to office housekeeping, every detail is crafted for convenience and efficiency; all accessible within a click through inplace Mobile App.



**Office butler for
each floor**



**Office
housekeeping**



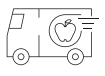
**Office catering
service**



**Concierge service at
your fingertips**



**Reserve your meeting room
online**



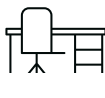
**Hassle-free grocery
car delivery**



**Bank
priority access**



**Clinic
access**



**Business lounge access in
each place**



**Discount on
selected stores**



**24/7 security &
guarding**



Members also enjoy four signature business lounges across the districts, featuring rooftop terraces with food lounges, rooftop restaurants, pools, outdoor event spaces for rental, and dedicated fitness & yoga areas. Inplace Business Club seamlessly blends productivity, relaxation, and lifestyle.

inplace *Meeting rooms*

Access to Meeting rooms & Lounge area:

Enjoy fully equipped meeting rooms and comfortable lounge area that could be reserved instantly through Inplace Mobile App.



Comes in 3 categories

- **Small** up to 4 people
- **Large** up to 8 people
- **Executive** 10+ people

- All renders, visuals and layouts are for illustrative purposes only. Facade designs, elements and materials may vary by elevation style.
- Drawings are not to scale. Areas and dimensions may vary and are subject to change without prior notice.



- All renders, visuals and layouts are for illustrative purposes only. Façade designs, elements and materials may vary by elevation style.
- Drawings are not to scale. Areas and dimensions may vary and are subject to change without prior notice.

inplace *Business lounge*

Beyond workspaces, a world of services designed around you. The Roof Lounge is your gateway to elevated experiences. Accessible via the Membership Card, it's a space to unwind, dine, and connect—seamlessly blending productivity with luxury, community, and lifestyle.



Fitness & yoga



Rooftop Pools



Private wellness center



Event space



Rooftop terrace



Rooftop restaurants

Lounges designed as extensions of the office, perfect for meetings and networking.



- All renders, visuals and layouts are for illustrative purposes only. Facade designs, elements and materials may vary by elevation style.
- Drawings are not to scale. Areas and dimensions may vary and are subject to change without prior notice.

in **place**
Executive Suites

*in***place**

Executive Suites

designed to grow with you

A curated workplace experience where elegance blends with efficiency, empowering you to work, create, and connect seamlessly. With up to 4.5m floor height, each office offers a sense of openness and sophistication. Single floor units ideal for startups, entrepreneurs, consultants, and boutique firms seeking a professional address with premium services.



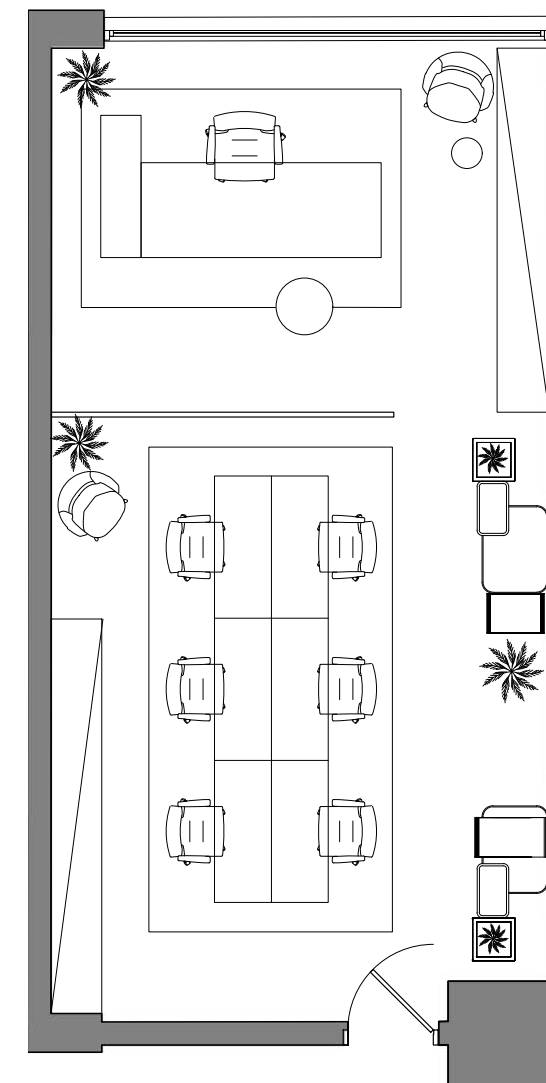
- All renders, visuals and layouts are for illustrative purposes only. Facade designs, elements and materials may vary by elevation style.
- Drawings are not to scale. Areas and dimensions may vary and are subject to change without prior notice.

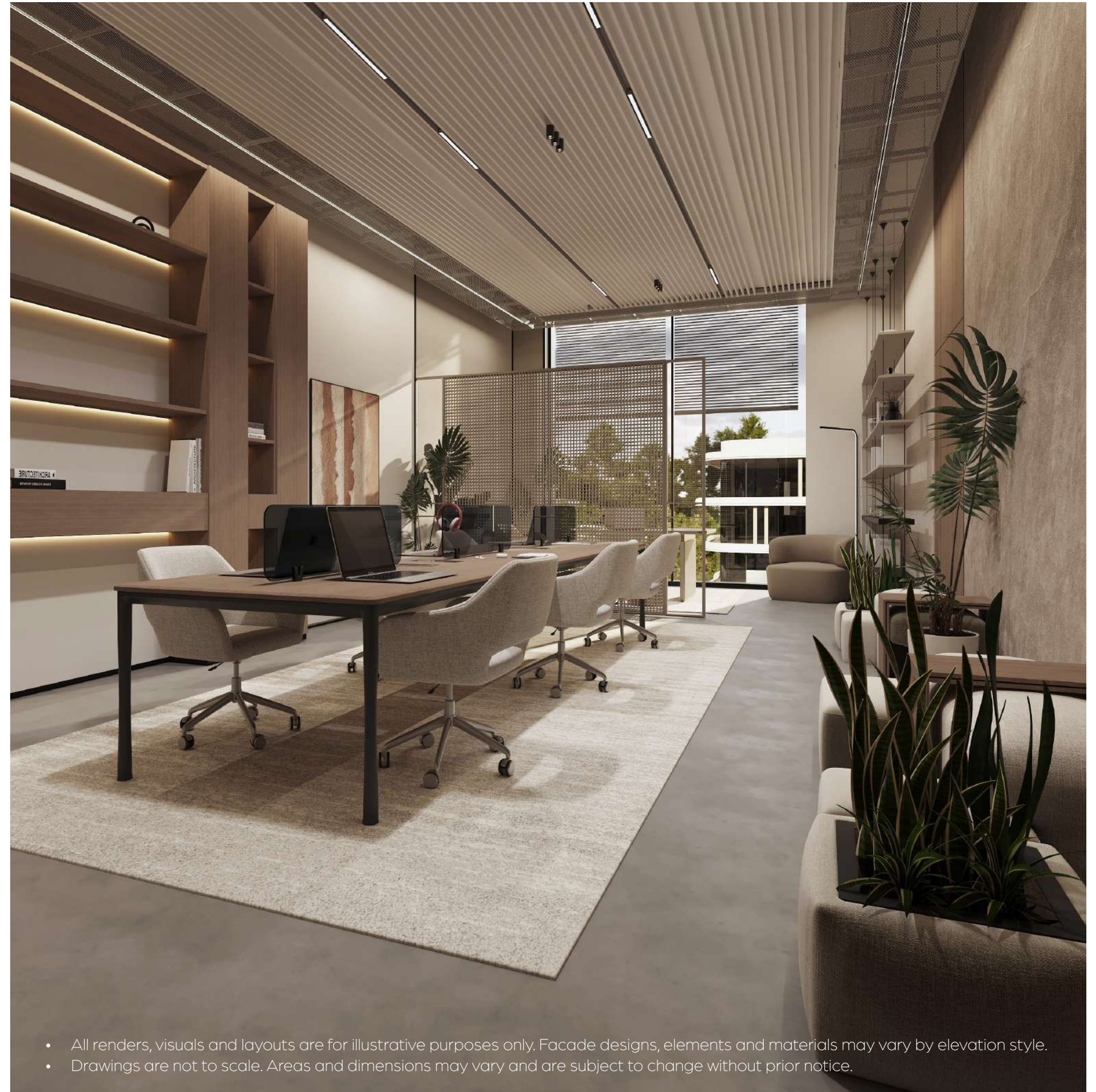


- All renders, visuals and layouts are for illustrative purposes only. Facade designs, elements and materials may vary by elevation style.
- Drawings are not to scale. Areas and dimensions may vary and are subject to change without prior notice.

THE
MARQ

*in***place**
Executive Suite
starting 45 SQM



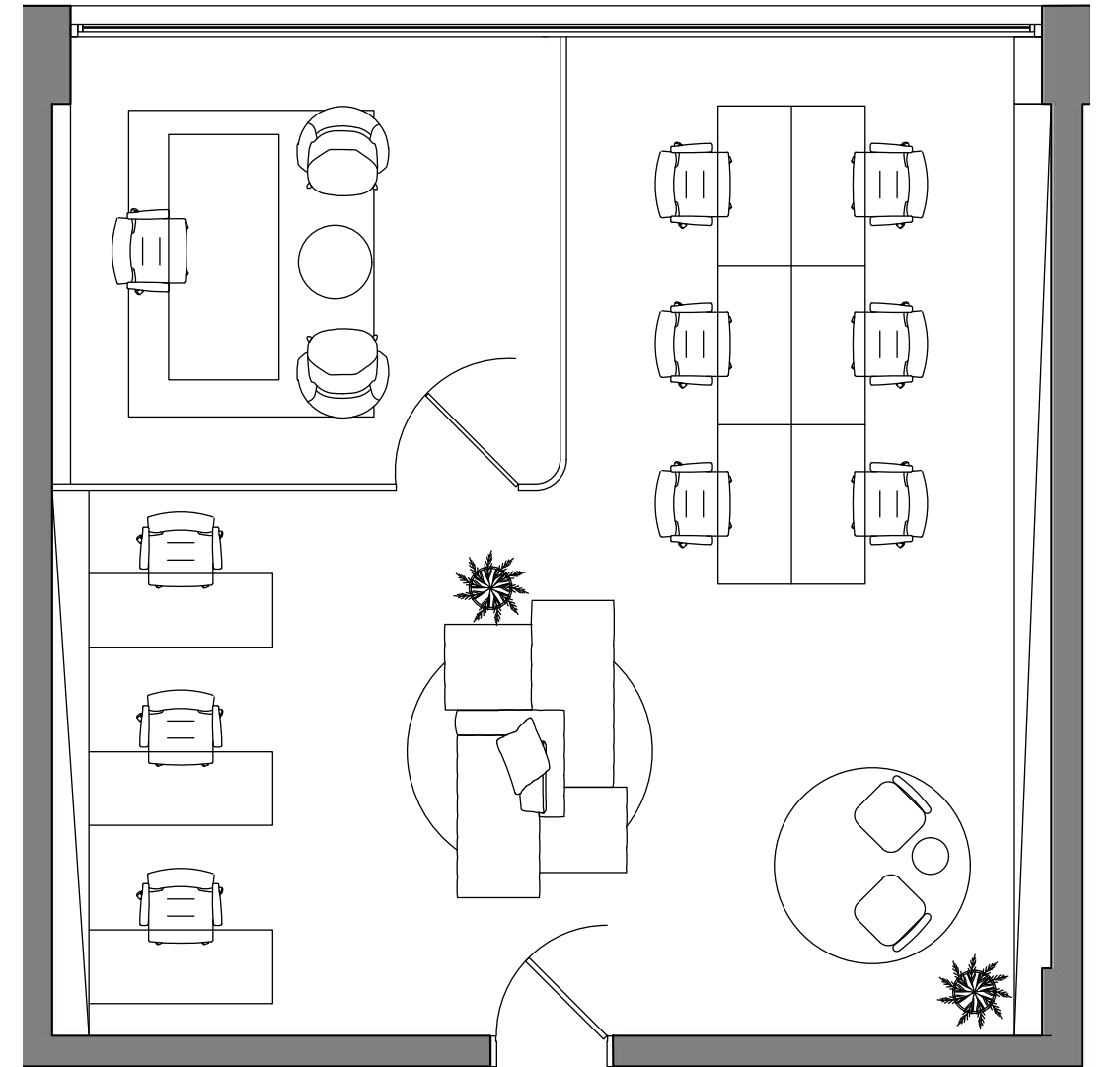




- All renders, visuals and layouts are for illustrative purposes only. Facade designs, elements and materials may vary by elevation style.
- Drawings are not to scale. Areas and dimensions may vary and are subject to change without prior notice.

THE
MARQ

*in***place**
Executive Suite
starting 90 SQM

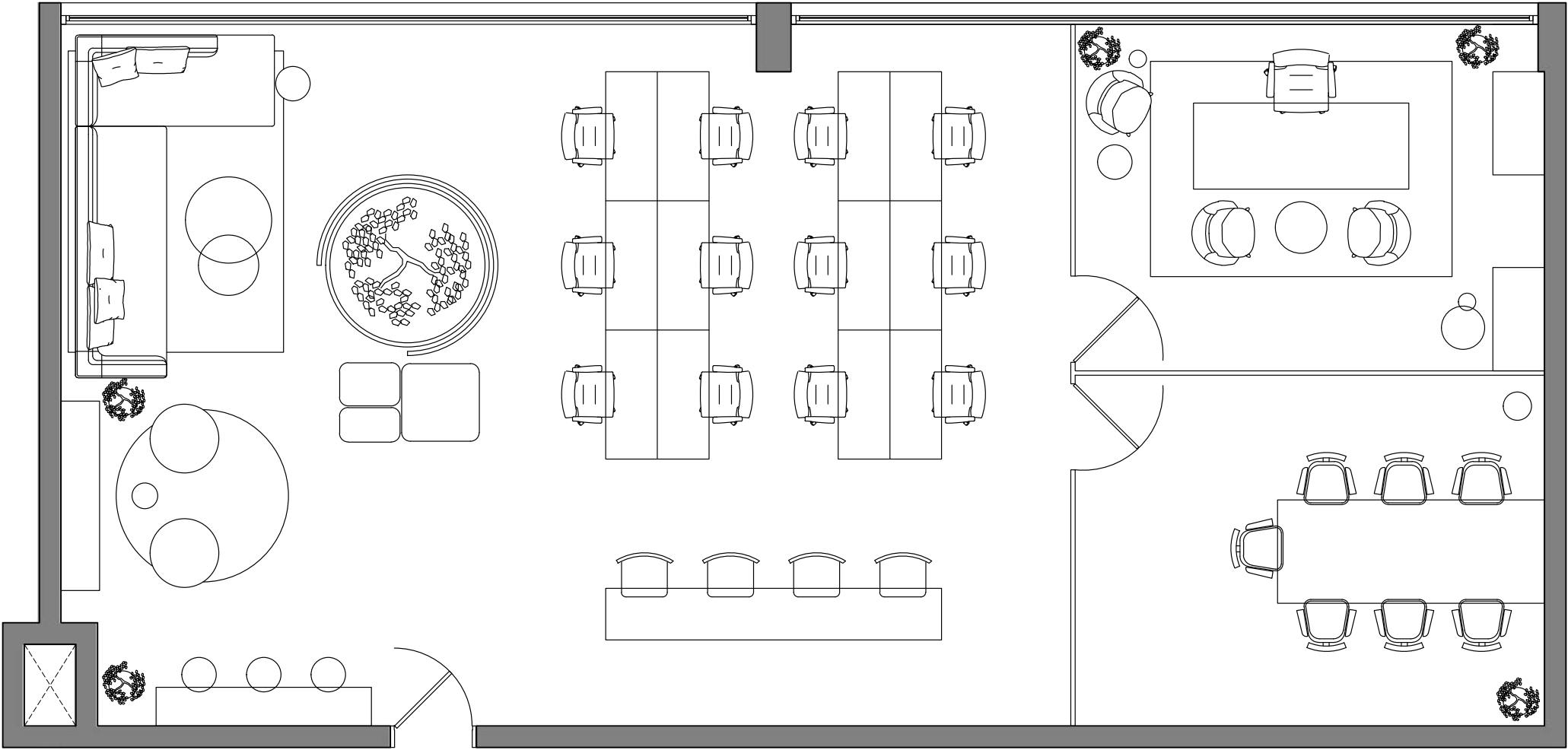






- All renders, visuals and layouts are for illustrative purposes only. Facade designs, elements and materials may vary by elevation style.
- Drawings are not to scale. Areas and dimensions may vary and are subject to change without prior notice.

THE MARQ



*in***place**
Executive Suite
starting 180 SQM



- All renders, visuals and layouts are for illustrative purposes only. Facade designs, elements and materials may vary by elevation style.
- Drawings are not to scale. Areas and dimensions may vary and are subject to change without prior notice.



- All renders, visuals and layouts are for illustrative purposes only. Facade designs, elements and materials may vary by elevation style.
- Drawings are not to scale. Areas and dimensions may vary and are subject to change without prior notice.



ZENAROSE

KARVE

ROMERO
BRITTO

LUDIA

*in***place**
HQ Suites

• All renders, visuals and layouts are for illustrative purposes only. Facade designs, elements and materials may vary by elevation style.
• Drawings are not to scale. Areas and dimensions may vary and are subject to change without prior notice.

inplace *HQ Suites* *shaped around you*

Each space is thoughtfully crafted to balance focus with connection, providing the flexibility to serve as your headquarters or adapt seamlessly to your evolving business needs. Two floor units with private access. Ideal for growing companies, creative agencies, and firms that need flexible layout with distinct zones for operations and clients interaction.



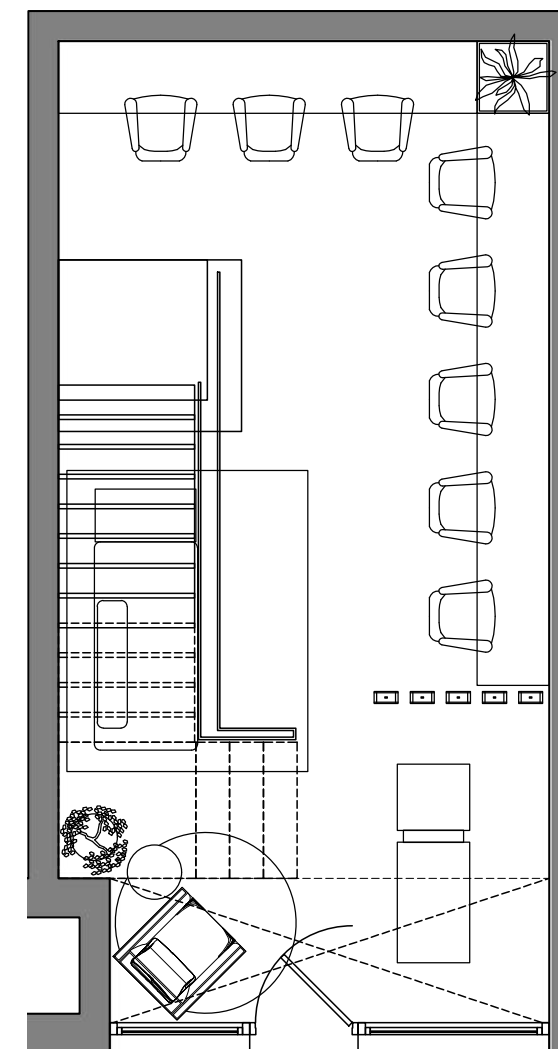
- All renders, visuals and layouts are for illustrative purposes only. Facade designs, elements and materials may vary by elevation style.
- Drawings are not to scale. Areas and dimensions may vary and are subject to change without prior notice.

THE
MARQ

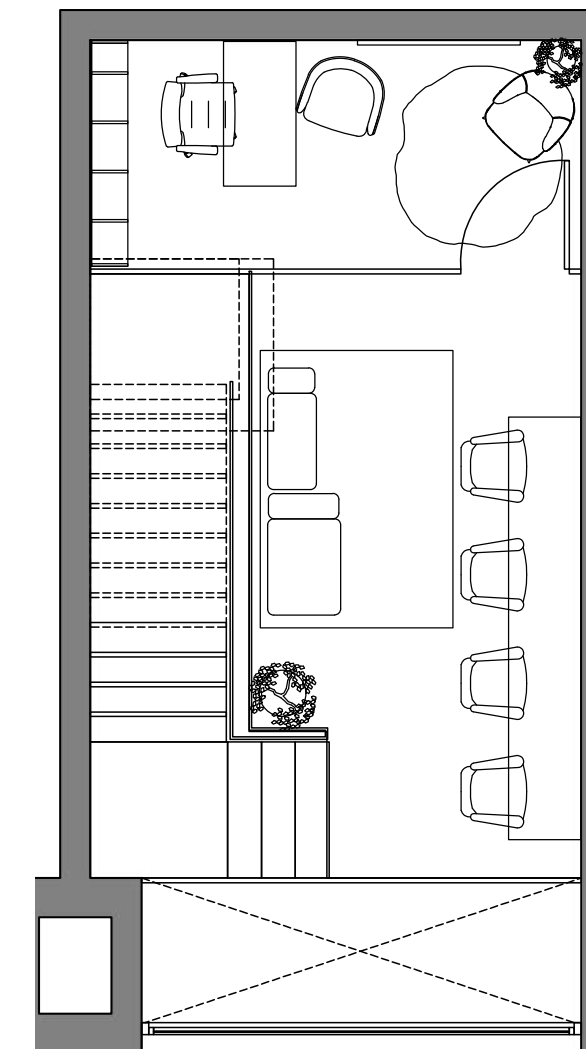
inplace
HQ Suite
starting 105 SQM



- All renders, visuals and layouts are for illustrative purposes only. Facade designs, elements and materials may vary by elevation style.
- Drawings are not to scale. Areas and dimensions may vary and are subject to change without prior notice.



Ground Floor



First Floor

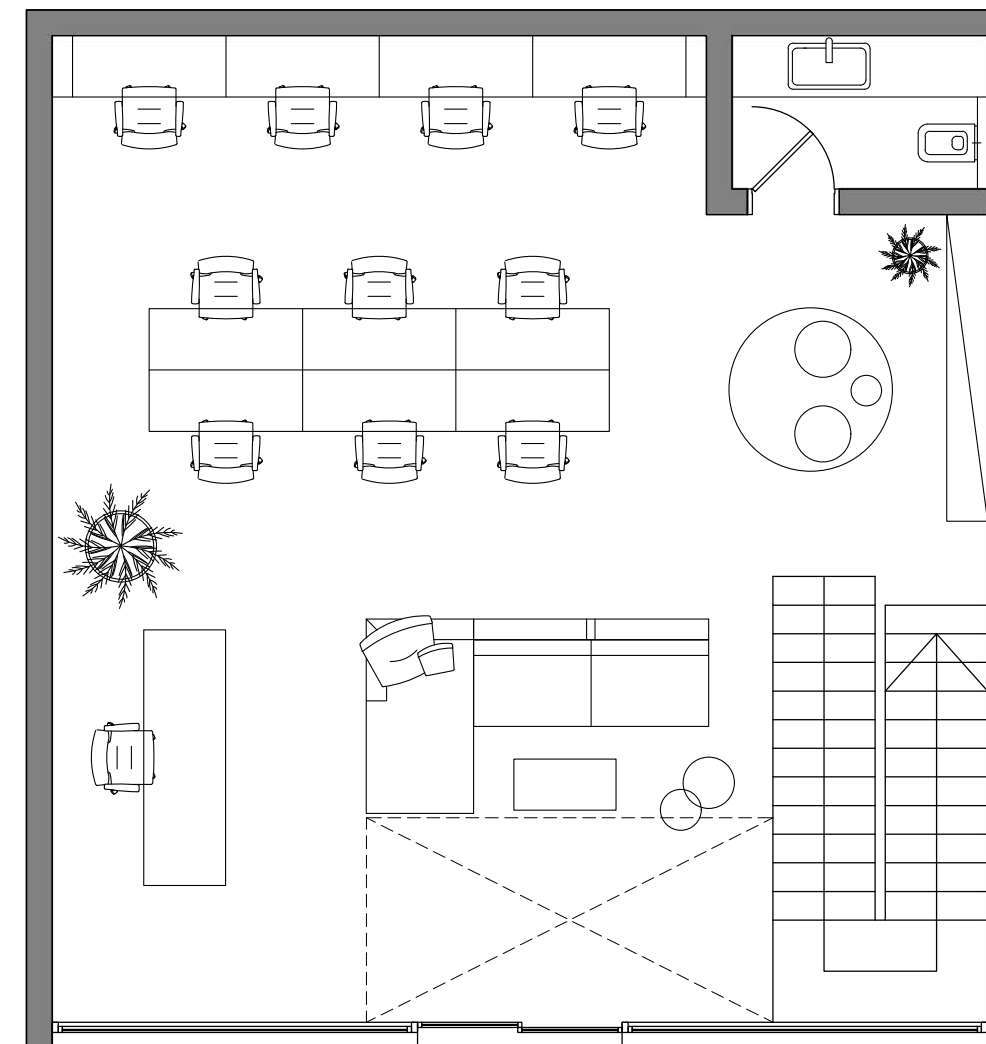


THE
MARQ

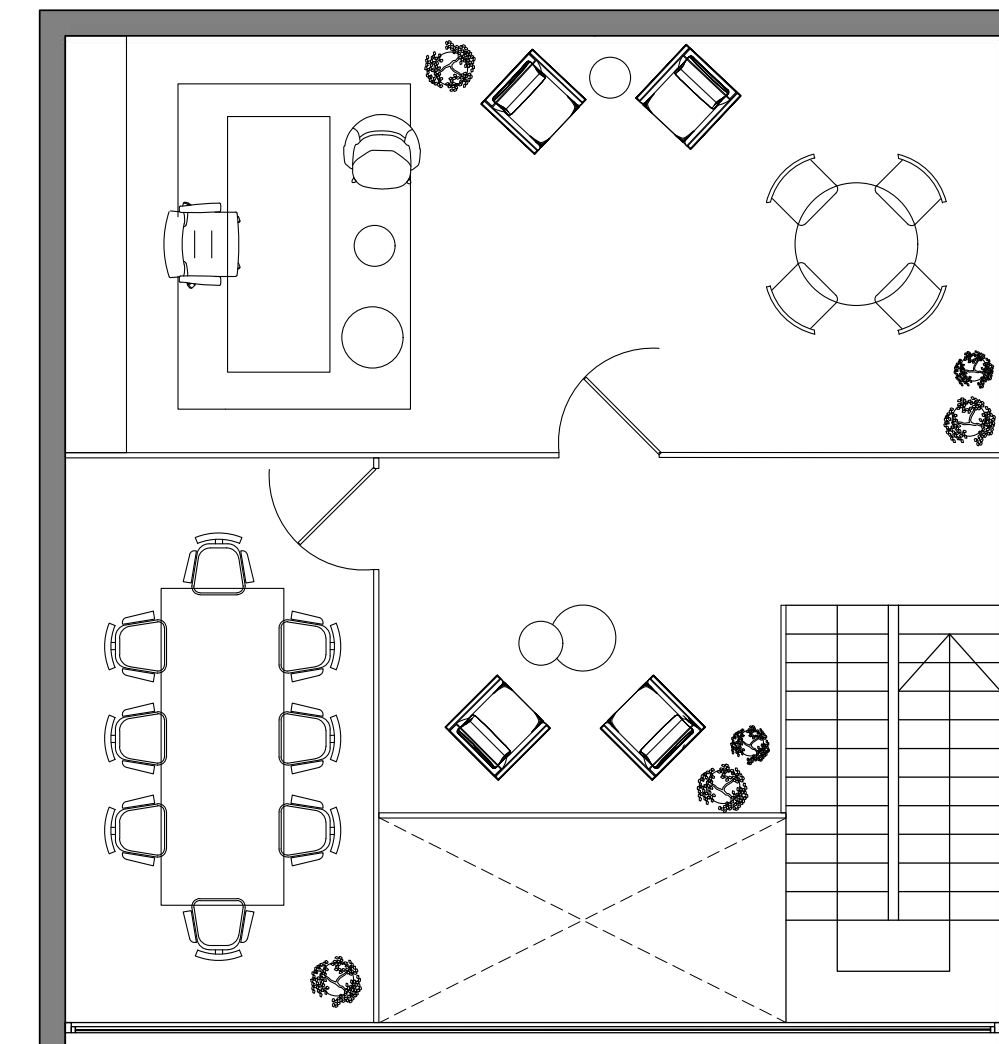
*in***place**
HQ Suite
starting 210 SQM



- All renders, visuals and layouts are for illustrative purposes only. Facade designs, elements and materials may vary by elevation style.
- Drawings are not to scale. Areas and dimensions may vary and are subject to change without prior notice.



Ground Floor



First Floor



inplace Business Suites
Finishing

inplace

Finishing options

- Core & Shell
- Flexi-Finish
- Fully Finished



inplace *Finishing specs*

Unit Space:

Floors: High quality cement tiling or screed

Walls: Putty Paint

Ceiling: Putty Paint

Unit door: Glass/wood

Ac works: AC tie in point only

Electrical works:

Electrical works will be established from hoses, tensioners and the chassis of light current works will be established to the unit without cables and without electraical and light current panels.

Terraces (If any):

Floors: High quality porcelain/ceramic

Walls: Matching external facade

Ceiling: Matching external facade

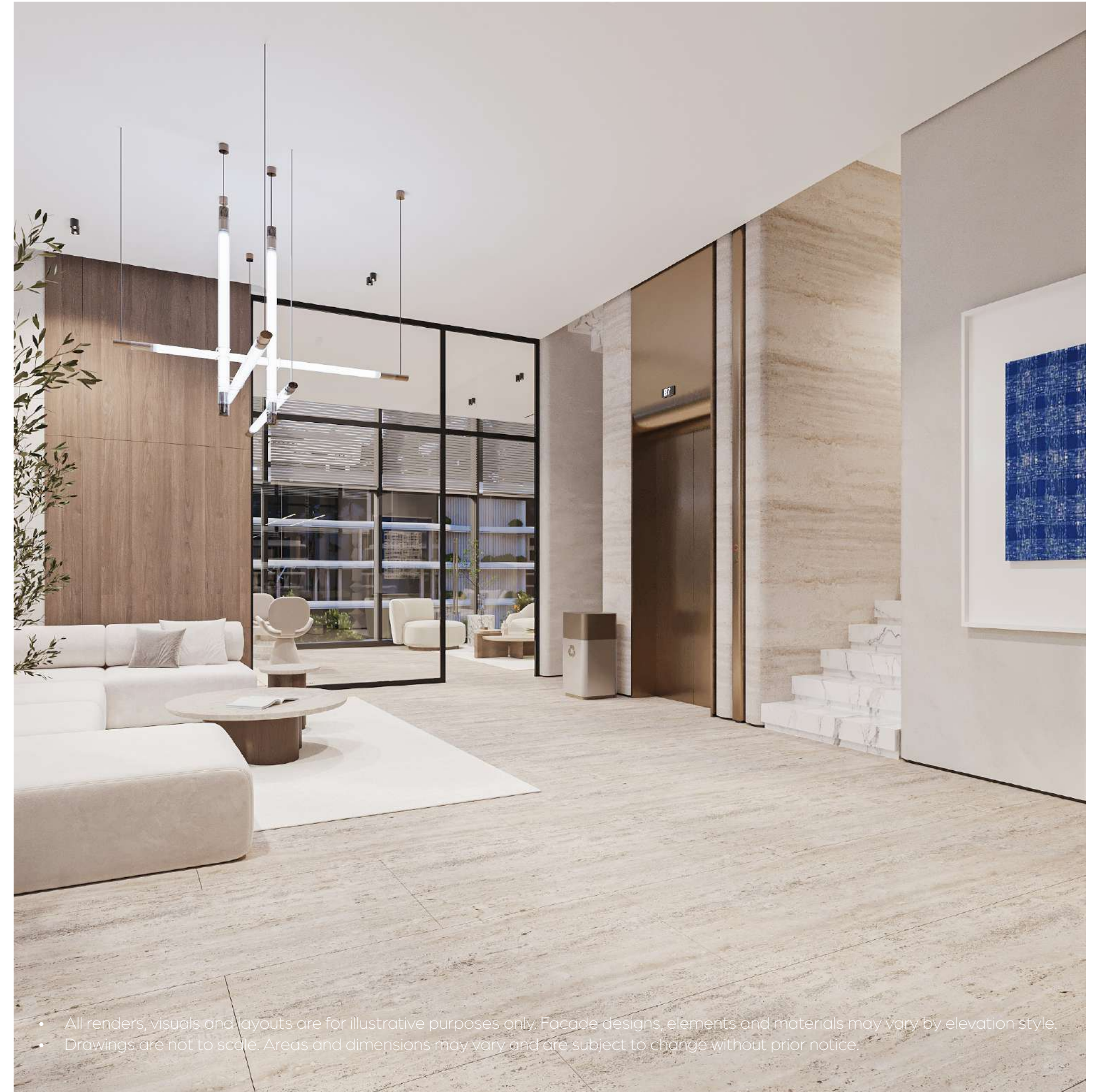
Plumbing works:

Water supply and drainage tie-in pointys only

Firefighting works:

The unit will be connected to the firefighting network

Disclaimer: All finishing materials are tentative. Information is subject to change without notice depending on availability of the specified materials.



*Shaping in**place** together*

THE
MARQ





THE MARQ

The Marq was established in 2019 and has rapidly emerged as a leader in Egypt's real estate landscape. As an art-driven, design-led lifestyle developer, we are redefining community living across East Cairo's most strategic locations. With a land portfolio of over 1,300 acres, we're crafting distinctive residential communities and commercial destinations. Guided by creativity and purpose, we go beyond building spaces—we curate experiences that inspire people to dream bigger, live boldly, and truly Live Inspired.

THE MARQ *Gardens*

THE *Water* MARQ

THE MARQ *Ville*

THE WONDER MARQ

Marquette

inplace.

Live inspired



THE MARQ

☎ 16669

🌐 themarqcommunities.com

Building 4 ,14th Sector,
South 90 st,New Cairo, Cairo.